



# TECHNOLOGY TRANSFER OFFICE

UNIVERSITY OF COLORADO

## BULLETIN

### > WORKING WITH OPEN SOURCE SOFTWARE

#### Contact Us:

CU-Boulder and CU-Colorado  
Springs inventors:

Kate Tallman  
[kate.tallman@cu.edu](mailto:kate.tallman@cu.edu)  
phone: 303-492-5732  
fax: 303-492-2128

UC Denver inventors:

Rick Silva  
[rick.silva@uchsc.edu](mailto:rick.silva@uchsc.edu)  
phone: 303-724-0222  
fax: 303-724-0816

Information about licensing to  
start-up companies:

Tom Smerdon  
[tom.smerdon@cu.edu](mailto:tom.smerdon@cu.edu)  
phone: 303-735-0621  
fax: 303-735-3831

General information and CU  
System office:

David Allen  
[david.allen@cu.edu](mailto:david.allen@cu.edu)  
phone: 303-735-3711  
fax: 303-735-3831

General address for  
correspondence:

CU System Technology  
Transfer Office  
4740 Walnut St., Suite 100  
588 SYS  
Boulder, CO 80309-0588

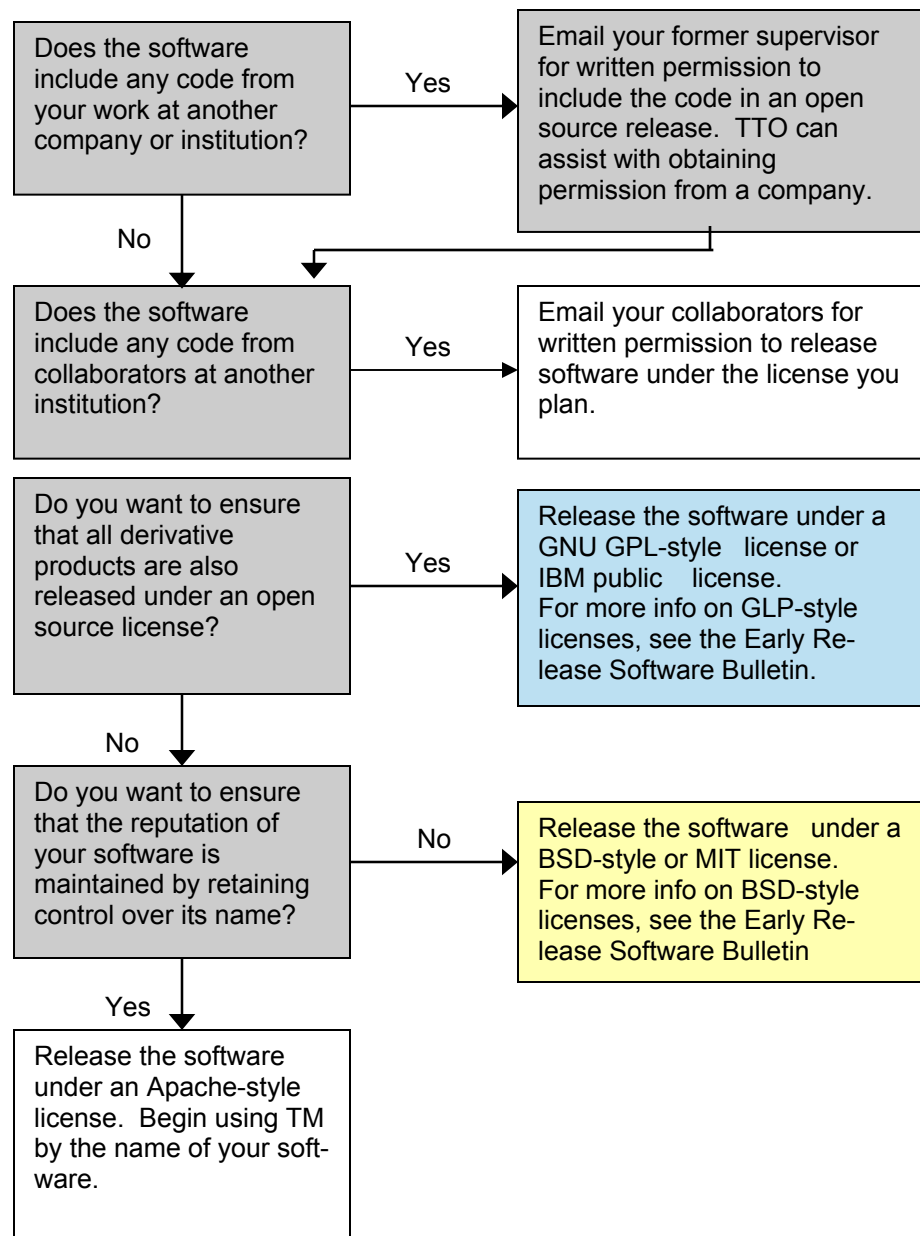
Web site:

[www.cu.edu/techtransfer](http://www.cu.edu/techtransfer)

### *How to Release Open Source Software*

The Technology Transfer Office (TTO) encourages the use of open source software and the release of CU software under open source licenses. However, there are a few legal issues that you should be aware of before working with open source.

We can help ensure that you are not opening up the University to any liability by releasing software under an open source license. We can also offer you advice on choosing the appropriate open source or academic license to meet your goals for distribution of the software (see the Bulletin on "Early Release Software Licenses"). This flow chart should help you determine when you should contact the Technology Transfer Office for help. Once you have decided to release your software open source:





Regardless of how you release the software, you should include a copyright notice, disclaimer of liability and the grant number that supported the project. The following minimal disclaimer can be posted on your website along with any licensing information.

## ***CU's Copyright Disclaimer***

```
Copyright (c) <YEAR>, Regents of the University of Colorado.  
This software was developed by <RESEARCH GROUP> under contract number  
<Federal Granting Agency and Contract Number>
```

```
THIS SOFTWARE IS PROVIDED BY THE COPYRIGHT HOLDERS AND CONTRIBUTORS  
"AS IS" AND ANY EXPRESS OR IMPLIED WARRANTIES, INCLUDING, BUT NOT  
LIMITED TO, THE IMPLIED WARRANTIES OF MERCHANTABILITY AND FITNESS FOR  
A PARTICULAR PURPOSE ARE DISCLAIMED.
```

Use an MIT-style license in place of CU's Copyright Disclaimer if you would like to release the software with the fewest restrictions on individuals or companies who may incorporate it into their products. This is very similar to a BSD license.

## ***CU's MIT-style license***

```
Copyright (c) <year> Regents of the University of Colorado
```

```
Permission is hereby granted, free of charge, to any person obtaining  
a copy of this software and associated documentation files (the  
"Software"), to deal in the Software without restriction, including  
without limitation the rights to use, copy, modify, merge, publish,  
distribute, sublicense, and/or sell copies of the Software, and to  
permit persons to whom the Software is furnished to do so, subject to  
the following conditions:
```

```
The above copyright notice and this permission notice shall be included  
in all copies or substantial portions of the Software.
```

```
THE SOFTWARE IS PROVIDED "AS IS", WITHOUT WARRANTY OF ANY KIND, EXPRESS  
OR IMPLIED, INCLUDING BUT NOT LIMITED TO THE WARRANTIES OF MERCHANT-  
ABILITY, FITNESS FOR A PARTICULAR PURPOSE AND NONINFRINGEMENT. IN NO  
EVENT SHALL THE AUTHORS OR COPYRIGHT HOLDERS BE LIABLE FOR ANY CLAIM,  
DAMAGES OR OTHER LIABILITY, WHETHER IN AN ACTION OF CONTRACT, TORT OR  
OTHERWISE, ARISING FROM, OUT OF OR IN CONNECTION WITH THE SOFTWARE OR  
THE USE OR OTHER DEALINGS IN THE SOFTWARE.
```

## ***GNU Licenses***

Follow instructions for using the GNU GPL at [www.opensource.org/licenses/gpl-license.php](http://www.opensource.org/licenses/gpl-license.php). Follow instructions for using the GNU LGPL at [www.opensource.org/licenses/lgpl-license.php](http://www.opensource.org/licenses/lgpl-license.php)



### ***CU's Apache-style license***

Copyright (c) <YEAR>, Regents of the University of Colorado. All rights reserved.

Redistribution and use in source and binary forms, with or without modification, are permitted provided that the following conditions are met:

- 1.Redistributions of source code must retain the above copyright notice, this list of conditions and the following disclaimer.
- 2.Redistributions in binary form must reproduce the above copyright notice, this list of conditions and the following disclaimer in the documentation and/or other materials provided with the distribution.
- 3.The end-user documentation included with the redistribution, if any, must include the following acknowledgment: "This product includes software developed by the University of Colorado." Alternately, this acknowledgment may appear in the software itself, if and wherever such third-party acknowledgments normally appear.
- 4.The name "<SOFTWARE NAME>" must not be used to endorse or promote products derived from this software without prior written permission. For written permission, please contact the <RESEARCH GROUP NAME> <RESEARCH GROUP URL>.
- 5.Products derived from this software may not be called "<SOFTWARE NAME>", nor may "<SOFTWARE NAME>" appear in their name, without prior written permission of the <RESEARCH GROUP NAME>.

THIS SOFTWARE IS PROVIDED "AS IS" AND ANY EXPRESSED OR IMPLIED WARRANTIES, INCLUDING, BUT NOT LIMITED TO, THE IMPLIED WARRANTIES OF MERCHANTABILITY AND FITNESS FOR A PARTICULAR PURPOSE ARE DISCLAIMED. IN NO EVENT SHALL THE APACHE SOFTWARE FOUNDATION OR ITS CONTRIBUTORS BE LIABLE FOR ANY DIRECT, INDIRECT, INCIDENTAL, SPECIAL, EXEMPLARY, OR CONSEQUENTIAL DAMAGES (INCLUDING, BUT NOT LIMITED TO, PROCUREMENT OF SUBSTITUTE GOODS OR SERVICES; LOSS OF USE, DATA, OR PROFITS; OR BUSINESS INTERRUPTION) HOWEVER CAUSED AND ON ANY THEORY OF LIABILITY, WHETHER IN CONTRACT, STRICT LIABILITY, OR TORT (INCLUDING NEGLIGENCE OR OTHERWISE) ARISING IN ANY WAY OUT OF THE USE OF THIS SOFTWARE, EVEN IF ADVISED OF THE POSSIBILITY OF SUCH DAMAGE.

Additional open source licenses can be found at the Open Source Initiative website at [www.opensource.org](http://www.opensource.org). TTO can help you navigate these licenses and decide which one meets the goals of your research group. For help, please contact TTO using the contact information on page 1.

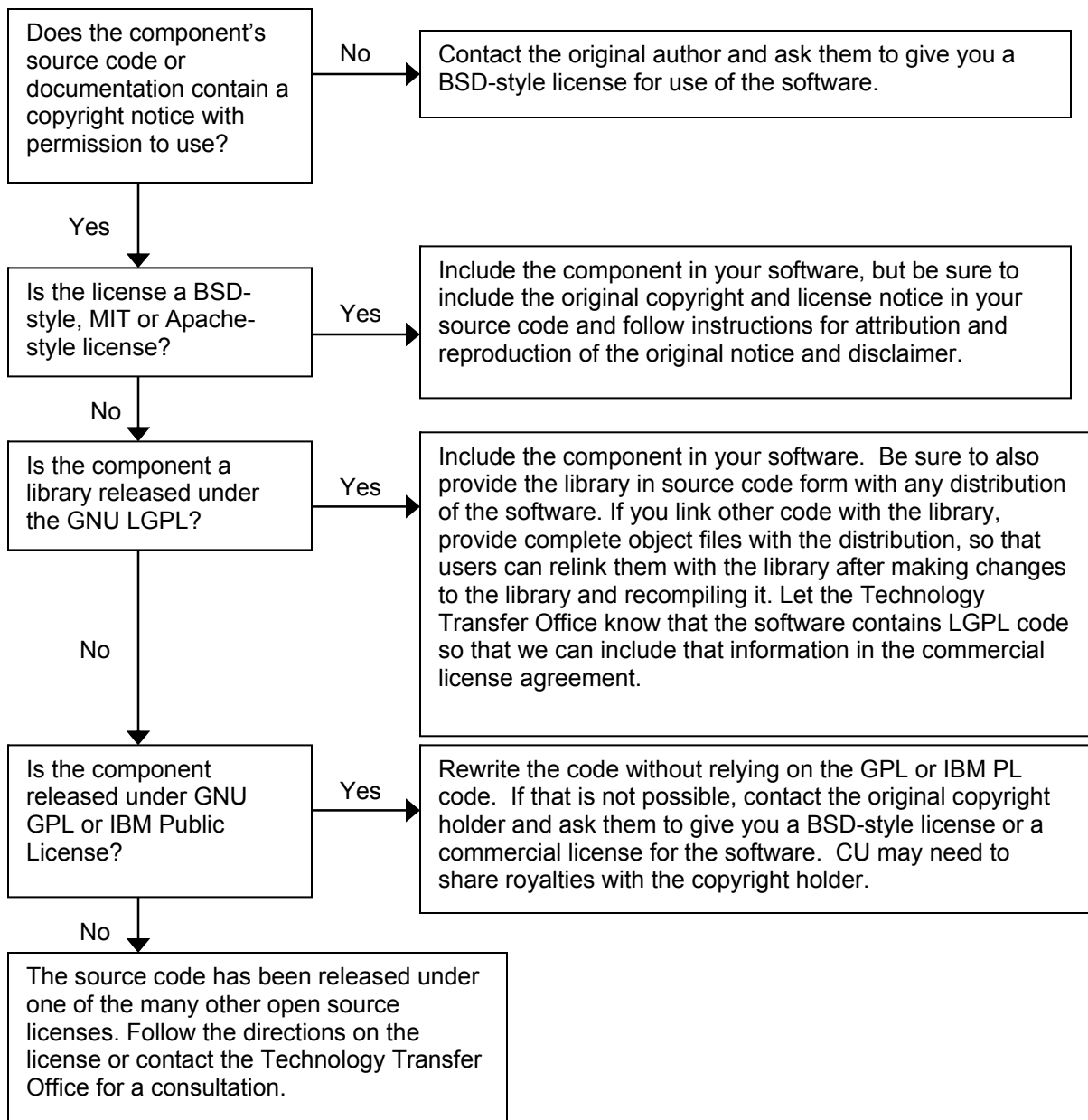


# TECHNOLOGY TRANSFER OFFICE

UNIVERSITY OF COLORADO

## ***Incorporating Open Source Components in Software for Commercial Distribution***

At the proof-of-concept stage, most university software includes open source components. It is important to keep track of which components are embedded in the source code, and what software licenses are associated with those components. You must replace certain open source code with your original code before commercial release of the software. If you are incorporating outside source code components into your software project:



To learn more about TTO processes: <http://www.cu.edu/techtransfer/about/bulletins.html>

To download disclosure forms: <http://www.cu.edu/techtransfer/disclose/>

For more info or to submit a disclosure, email [ttocontact@cu.edu](mailto:ttocontact@cu.edu)

[www.cu.edu/techtransfer](http://www.cu.edu/techtransfer)