

MERGING ATOMS AND BITS TO HELP US ALL BE LESS DISABLED

IDEA =  SPARKERS



THE CALMING CONVERGENCE

JOHN SEELY BROWN



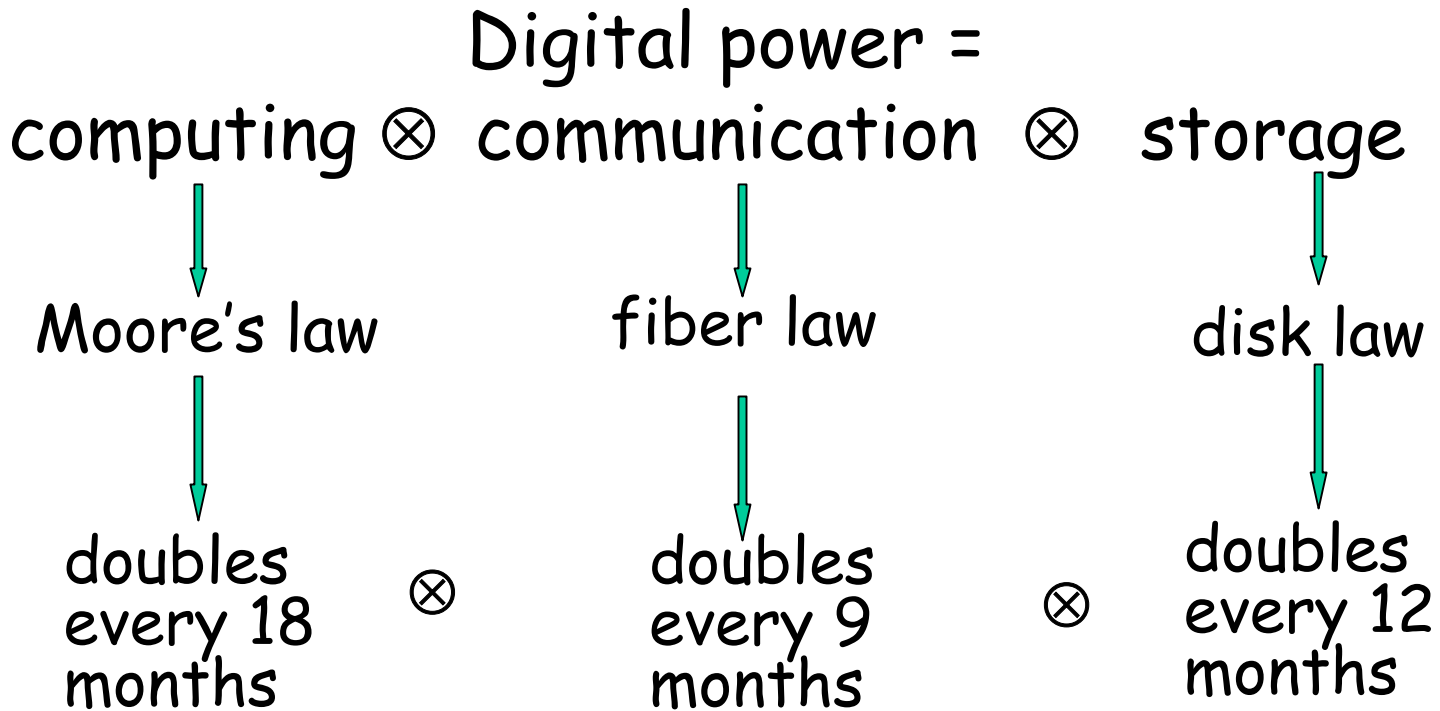
BUT COMPUTERS DON'T
SEEM TO MAKE MY LIFE
ANY CALMER.

LET THE VIRTUAL
AUGMENT THE
PHYSICAL



Fundamental dynamics--

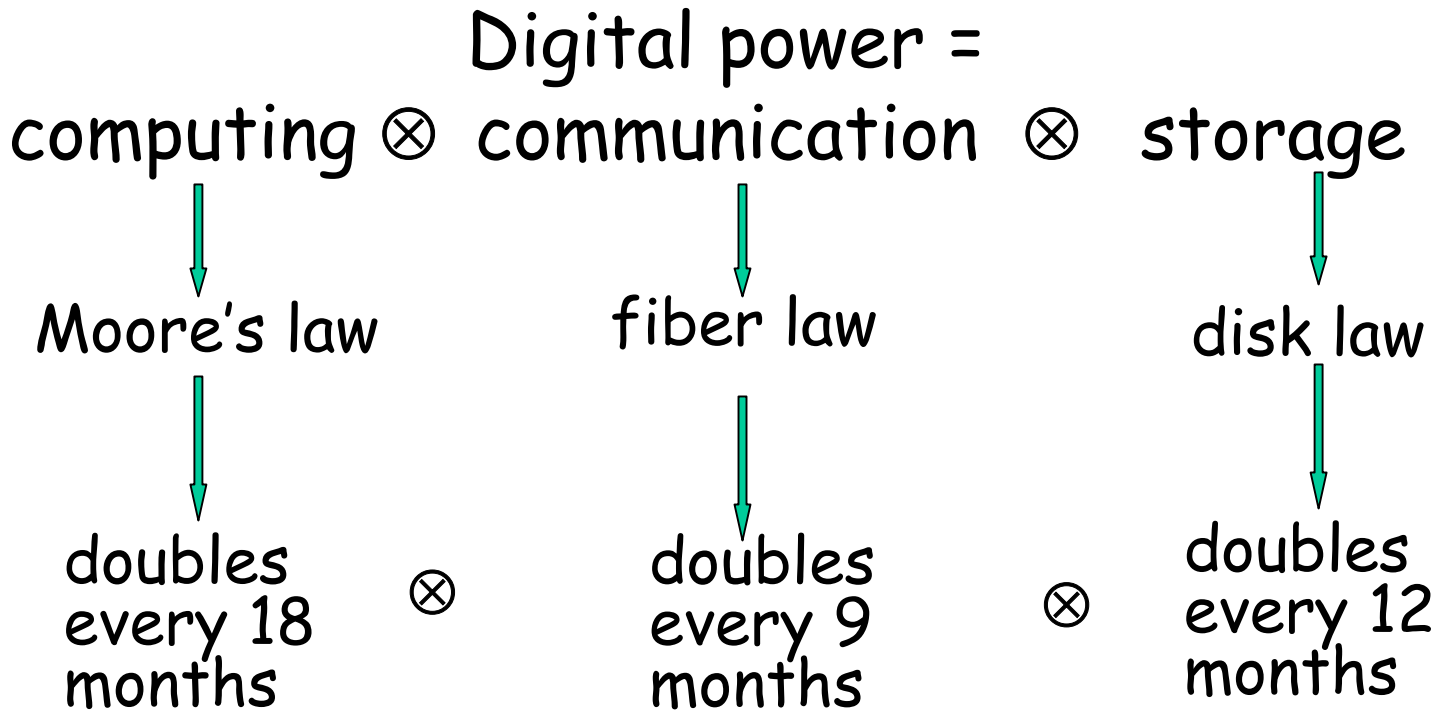
(Pace of change of the digital infrastructure)



hyper
exponential
pace of change

Fundamental dynamics--

(Pace of change of the digital infrastructure)



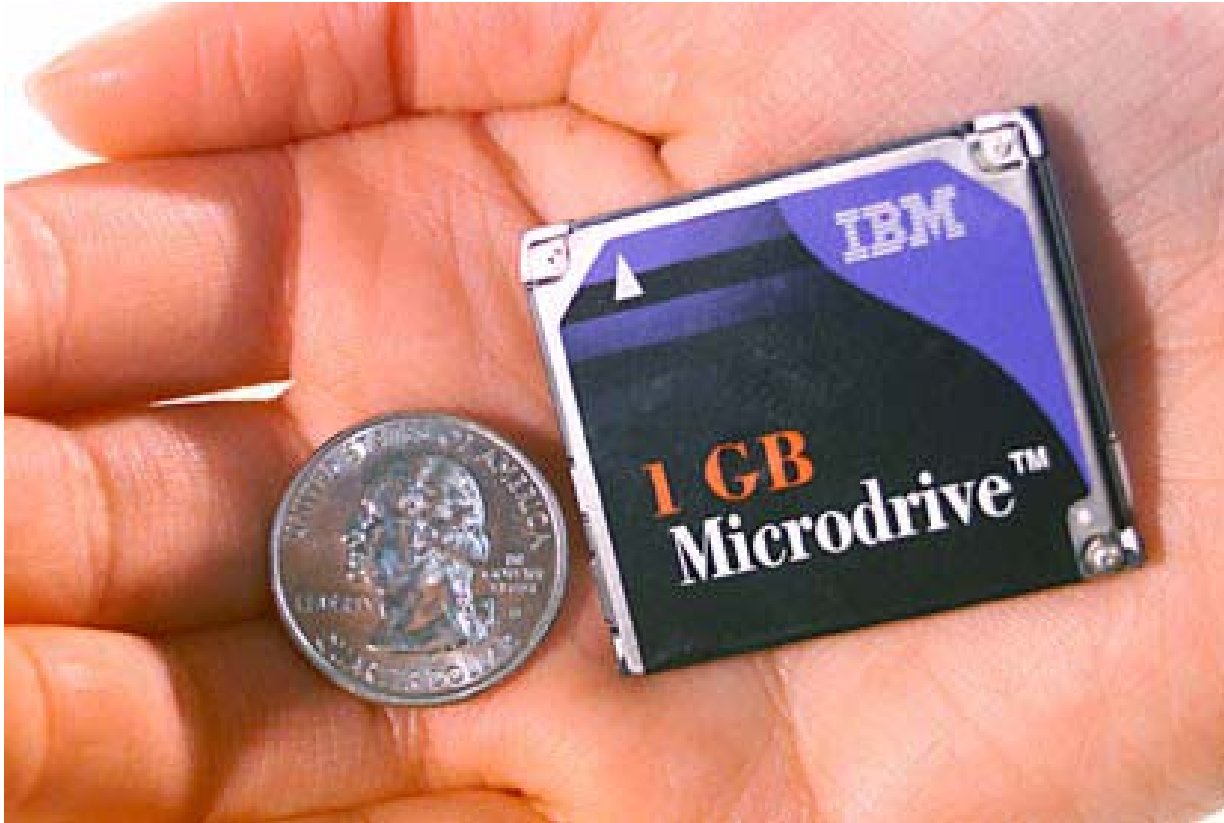
AND DON'T YOU ALSO HAVE MUCH BETTER ALGORITHMS?

COMPRESSION ALGORITHMS FOR MUSIC 20X BETTER.
MP3 CHANGES THE BUSINESS AND SOCIAL WORLDS OF
MUSIC.



THE AMAZING DISK DRIVE

FOR MY DIGITAL CAMERA WHERE PHYSICAL SIZE MATTERS

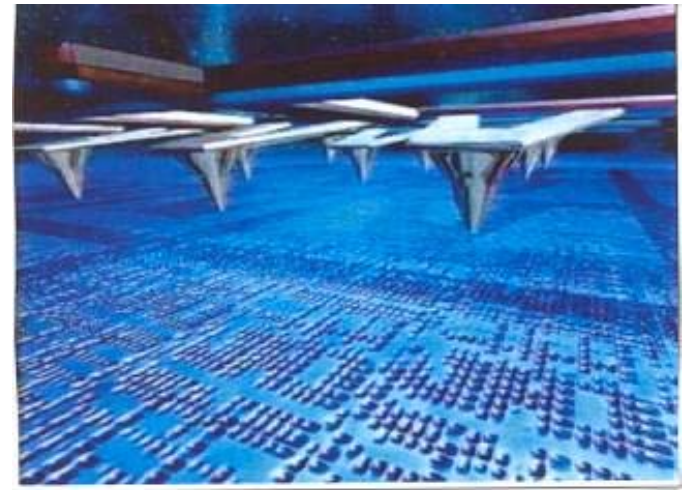


BOTH A DISRUPTIVE AND COMPLEMENTARY INNOVATION

STEPS TOWARD 1000 GIGABYTES

The tiny millipede disk array

BITS MEET ATOMS



1,024 array of cantilevers 3mm by 3mm
each with a 50 nanometers wide tip.

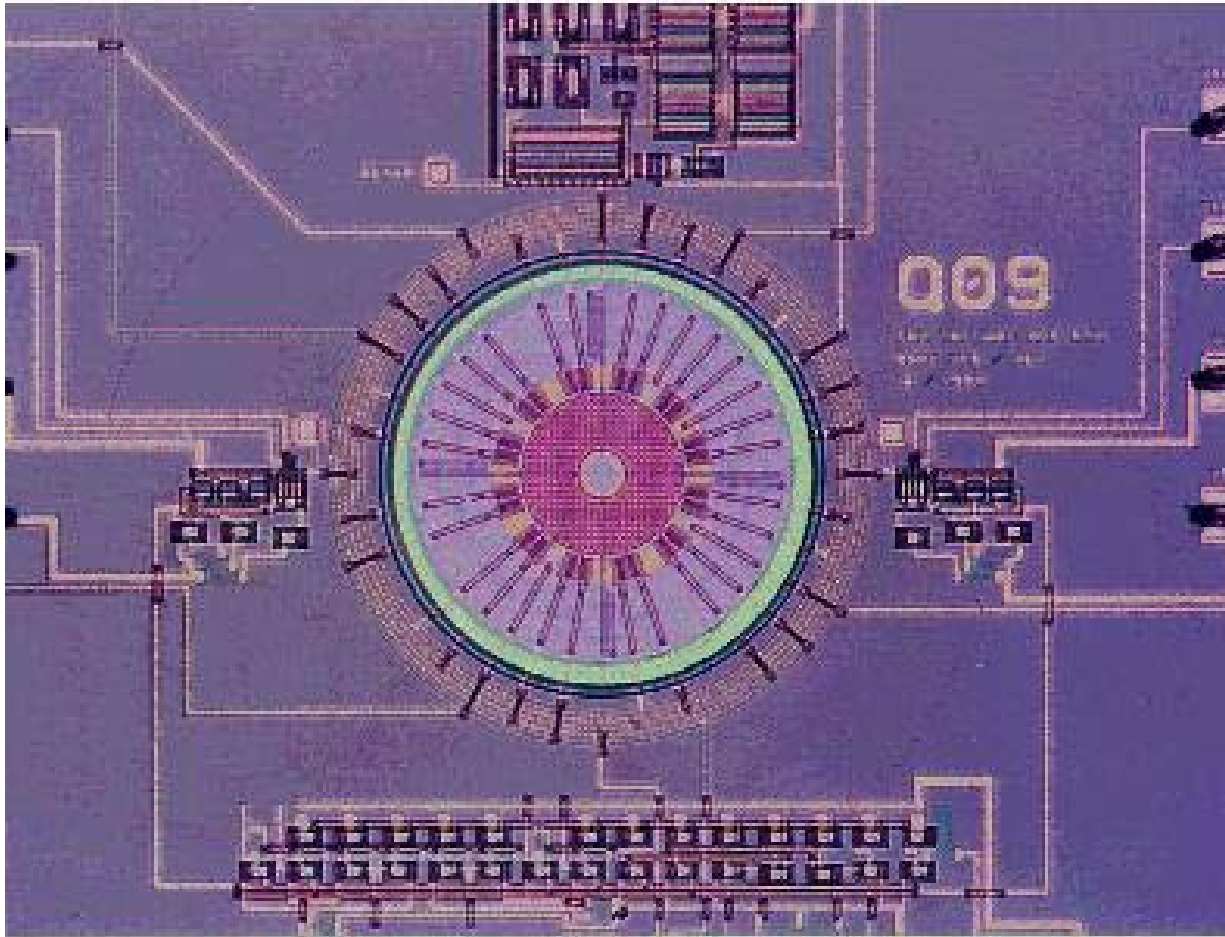
MEMS - BRIDGING THE NANO AND THE MACRO WORLD

MY WORLD IN MY HAND



HOW DOES THIS CHANGE WHAT I NEED TO KNOW?

MEMS GALORE



Dual-axis Gyro

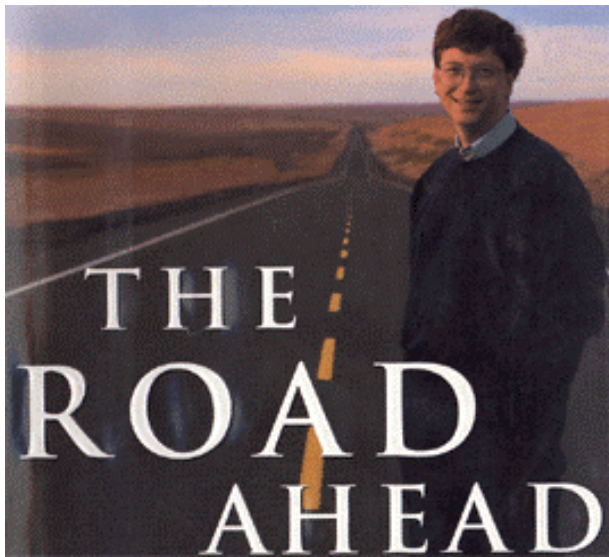
DYNAMICAL BALANCE

A WALKING WHEELCHAIR



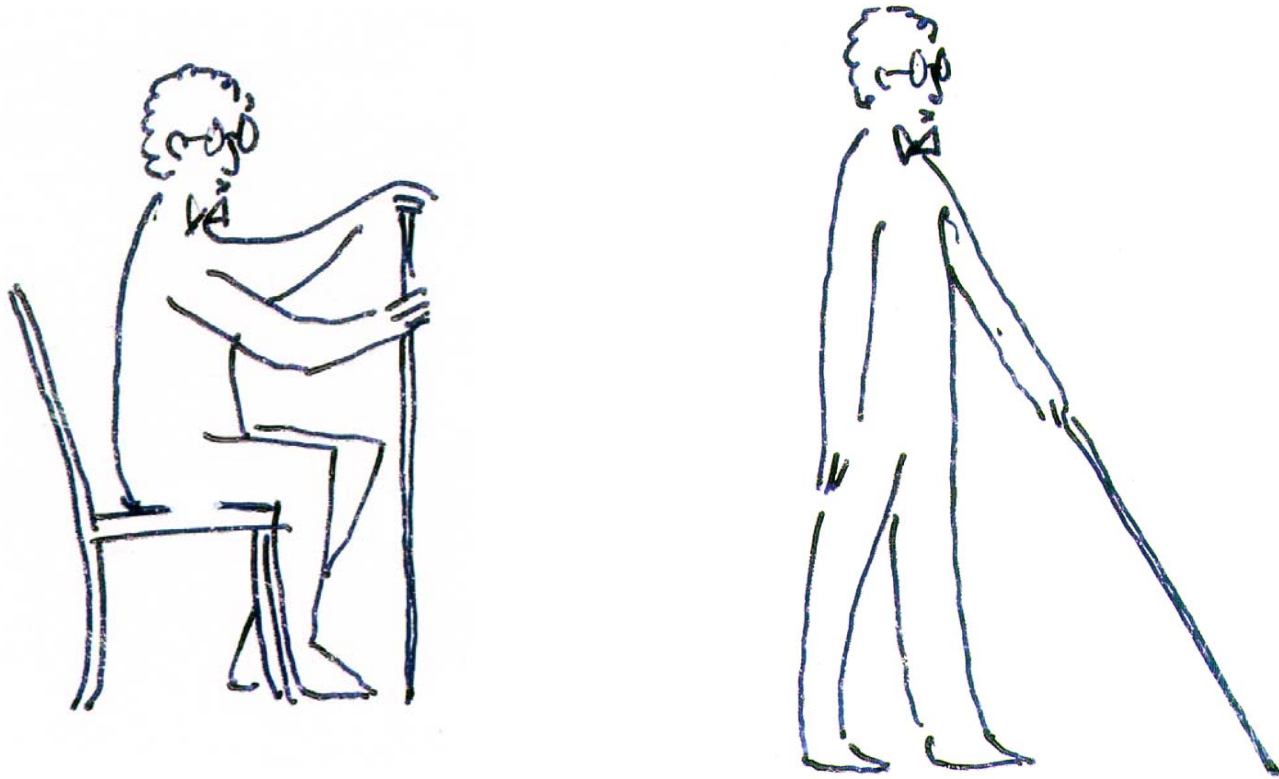
THE ROAD AHEAD AIN'T STRAIGHT –
A COMPLEX DIGITAL CULTURE IS UNFOLDING.

SOCIETY AND TECHNOLOGY CO-EVOLVE



BE AWARE OF TUNNEL VISION

HEIDEGGER - THE BLIND MAN & THE CANE

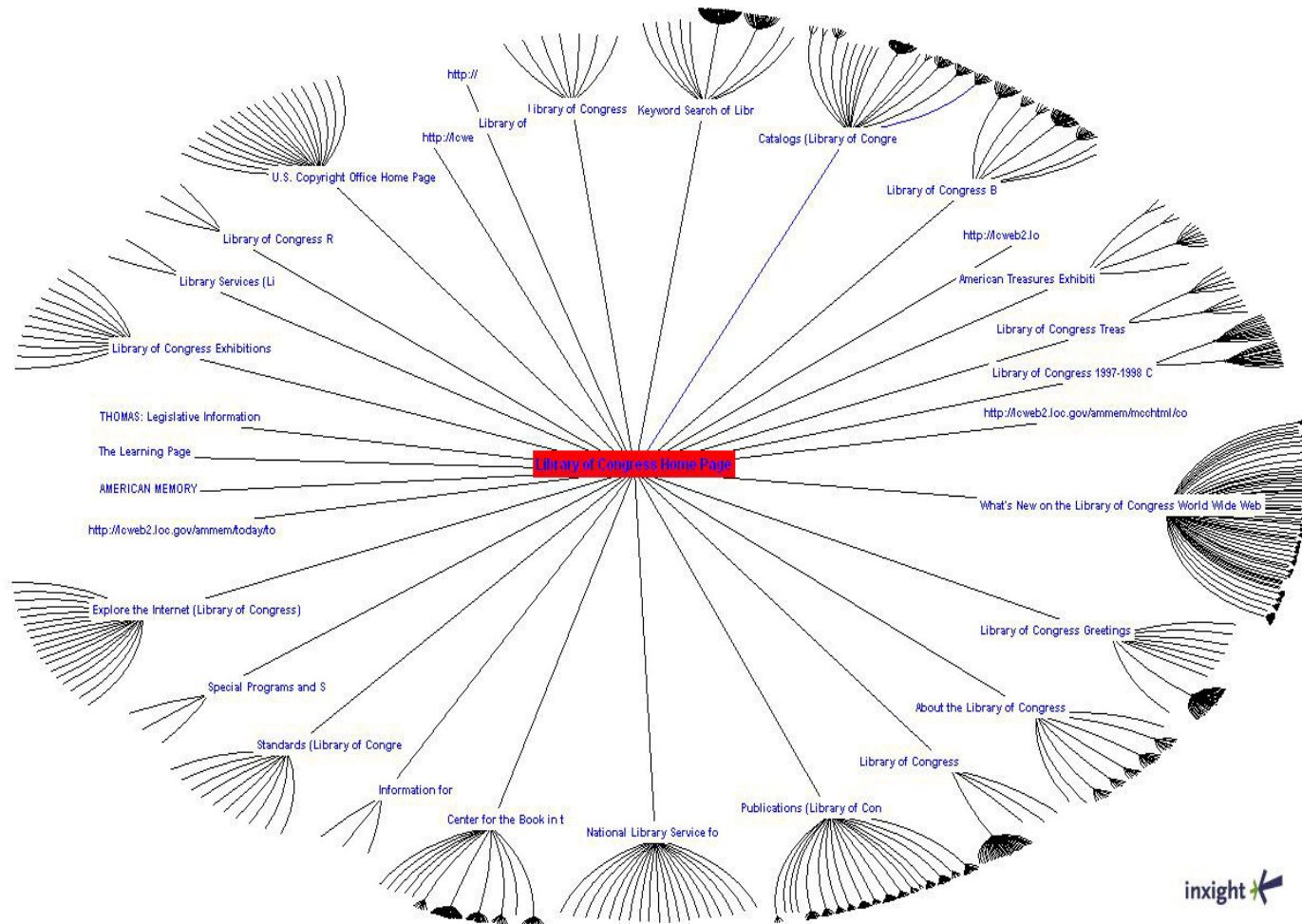


READY AT HAND: THE HANDLE DISAPPEARS.
WHY CAN'T WE USE INCREASE IN COMPUTATIONAL
POWER TO DESIGN INFORMATION SYSTEMS
WITH INTERFACES THAT DISAPPEAR??

AN EXAMPLE OF TUNNEL VISION - THE TOILET TUBE PHENOMENON



HYPERBOLIC TREE BROWSER



Web Browser created by [Inxight Software](#) using
Hyperbolic Tree for Java.



TAPPING THE SUBCONSCIOUS

3 CRITICAL DISTINCTIONS

1. CENTER - PERIPHERY

2. EXPLICIT - IMPLICIT

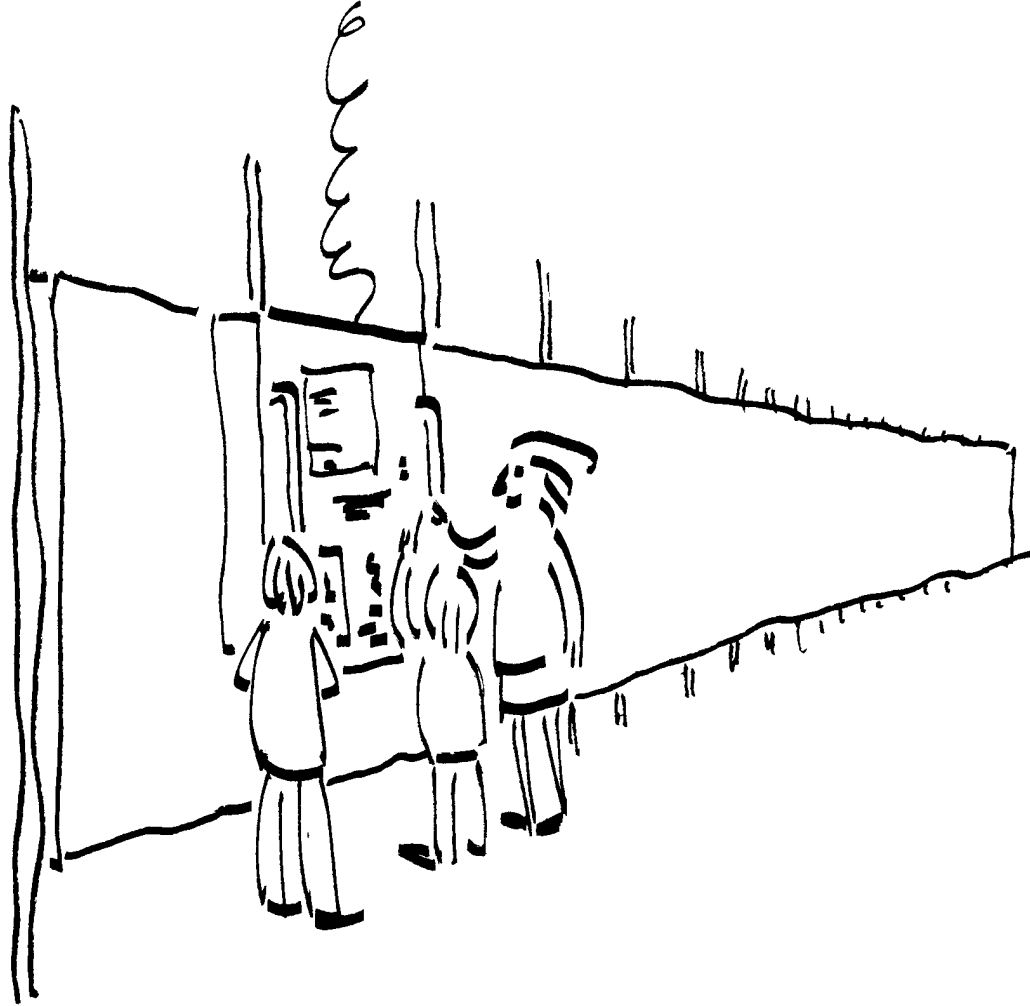
3. ATTENDING - ATTUNING

PLEASE, JSB
BE CONCRETE.

HMM, GOING BEYOND
THE DESIGN OF
INFORMATION
APPLIANCES.



WHERE VIRTUAL MEETS PHYSICAL-- HONORING THE PERIPHERY



A MAGIC LENS ON A TIME WALL

THE ENVISIONMENT & DISCOVERY COLLABORATORY

EVOCATIVE OBJECTS AFFORD KNOWING AND LEARNING



GERHARD FISCHER - CENTER FOR LIFE LONG LEARNING & DESIGN

TAPPING THE SUBCONSCIOUS

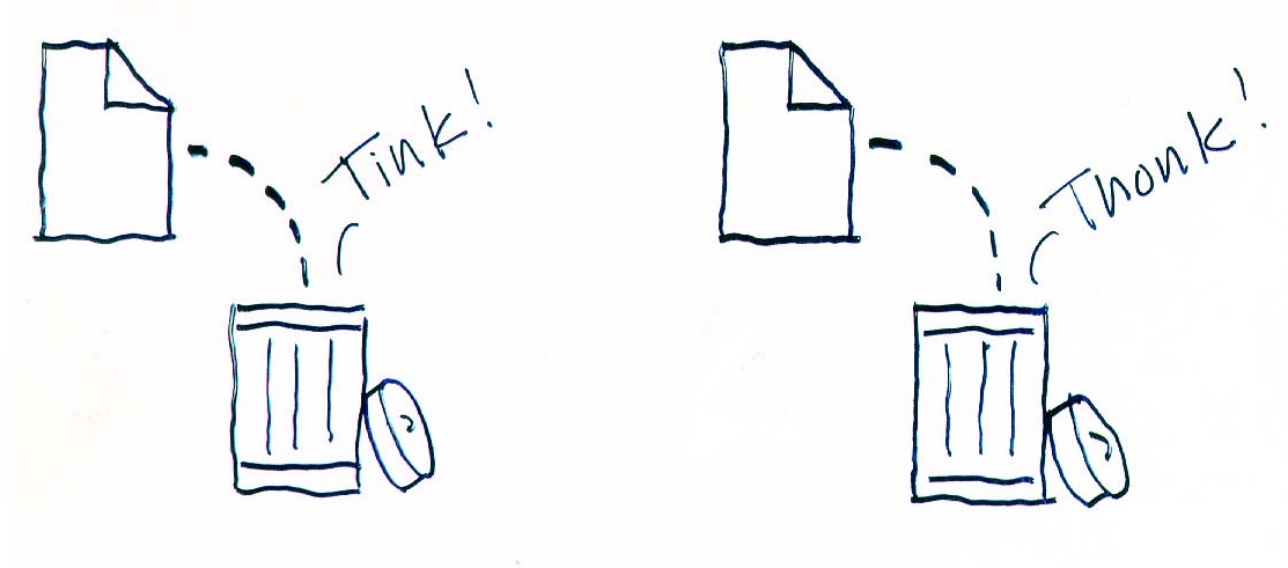
3 CRITICAL DISTINCTIONS

1. CENTER - PERIPHERY

2. EXPLICIT - IMPLICIT

3. ATTENDING - ATTUNING

AUDIO ICONS



AHHH -- ICONS
WITH A
LEITMOTIF!

THANKS
BILL
GAVER.



DYNAMIC AFFORDANCES AND SQUEEZY INTERFACES

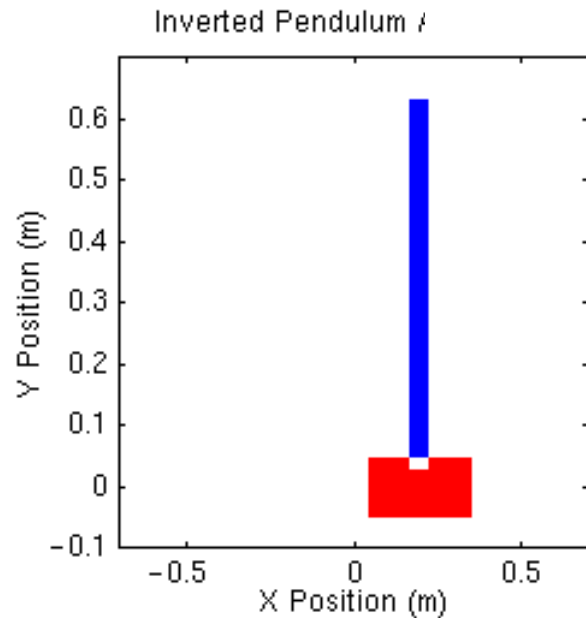


AND THIS IS JUST THE BEGINNING

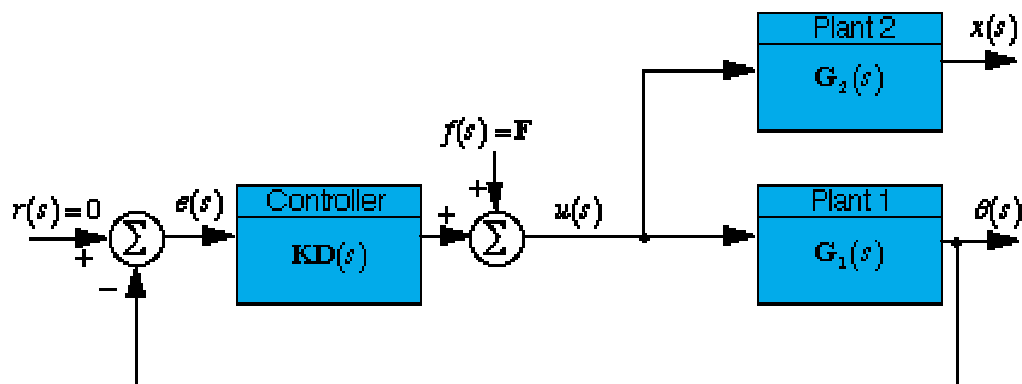
TAPPING THE PRACTICES OF THE REAL WORLD.



DYNAMIC BALANCE IS THE COIN OF THE DAY



Proportional-Integral-Derivative control



GYROSCOPES, SENSORS, COMPUTING



SEGWAY
TRANSPARENT, ROBUST

TAPPING THE SUBCONSCIOUS

3 CRITICAL DISTINCTIONS

1. CENTER - PERIPHERY
2. EXPLICIT - IMPLICIT
3. ATTENDING - ATTUNING

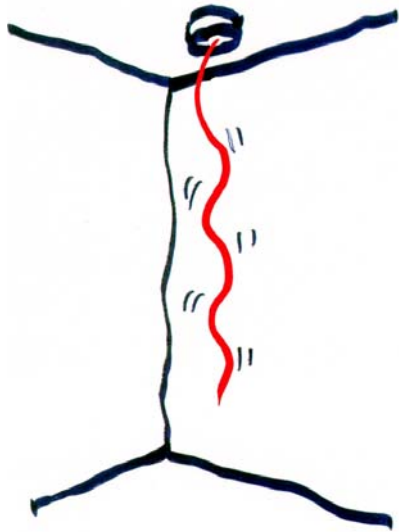
WHAT IS ATTUNING?



STEPS TOWARD ATTUNING

THE DANGLING STRING

(INDICATOR OF ETHER TRAFFIC)



THANKS
NATALIE AND
ROY!



THE WATER FOUNTAIN

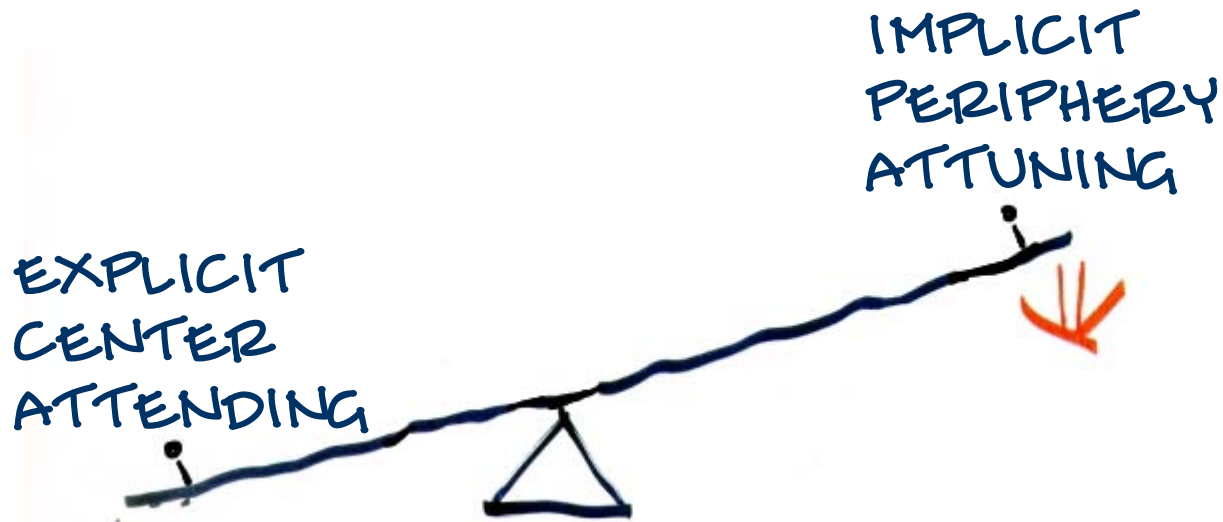
(INDICATOR OF STOCK PRICES)



THINGS THAT
THINK AND
LINK!



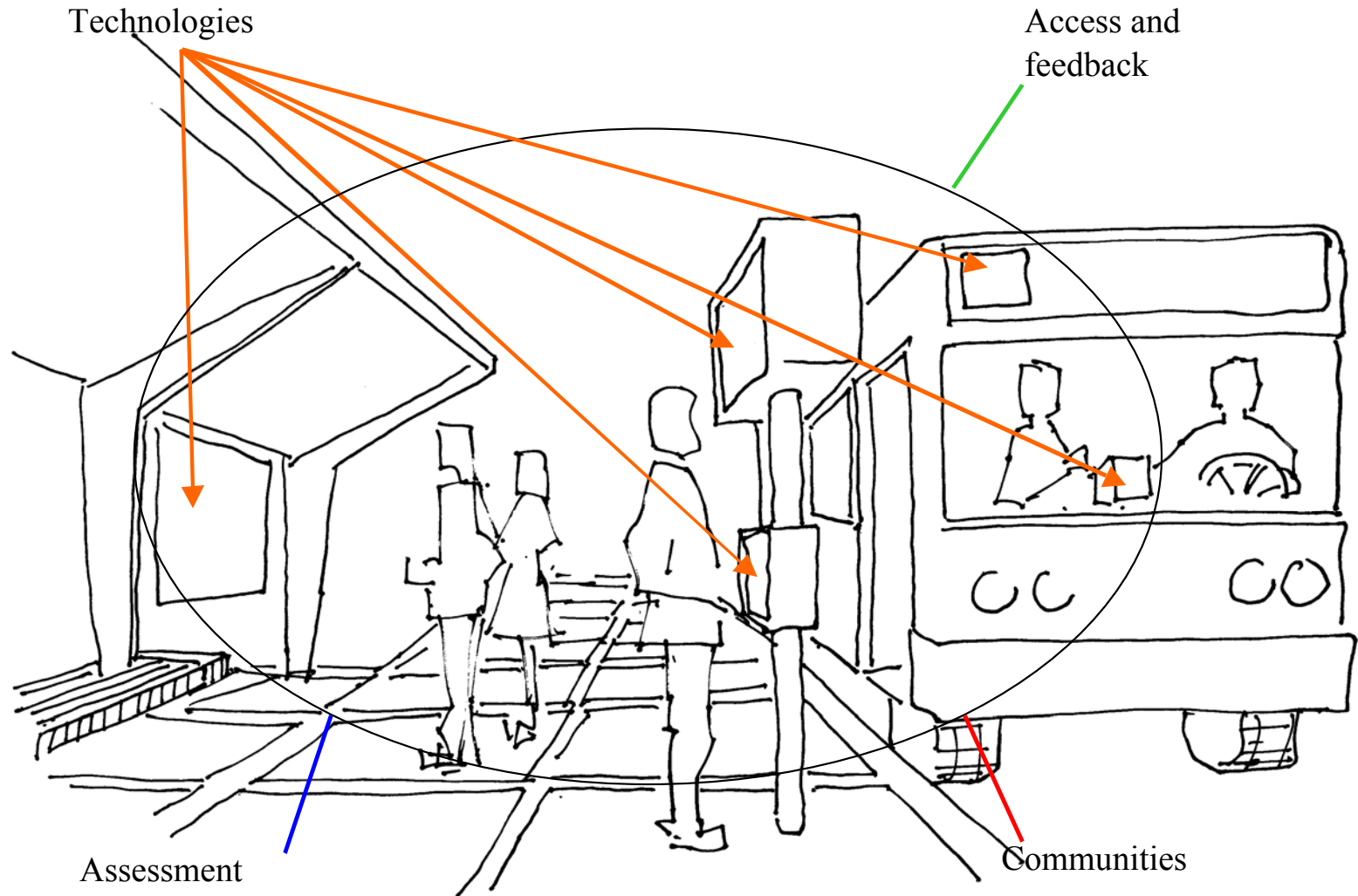
CALM COMPUTING: REBALANCING --



AH, HONORING ALL OF OUR COGNITIVE/SOCIAL CAPABILITIES, NOT JUST THE LEFT BRAIN.

INFORMATE THE CONTEXT

MOBILITY FOR ALL: A SOCIO TECHNICAL DESIGN



GERHARD FISCHER - CENTER FOR LIFE LONG LEARNING & DESIGN

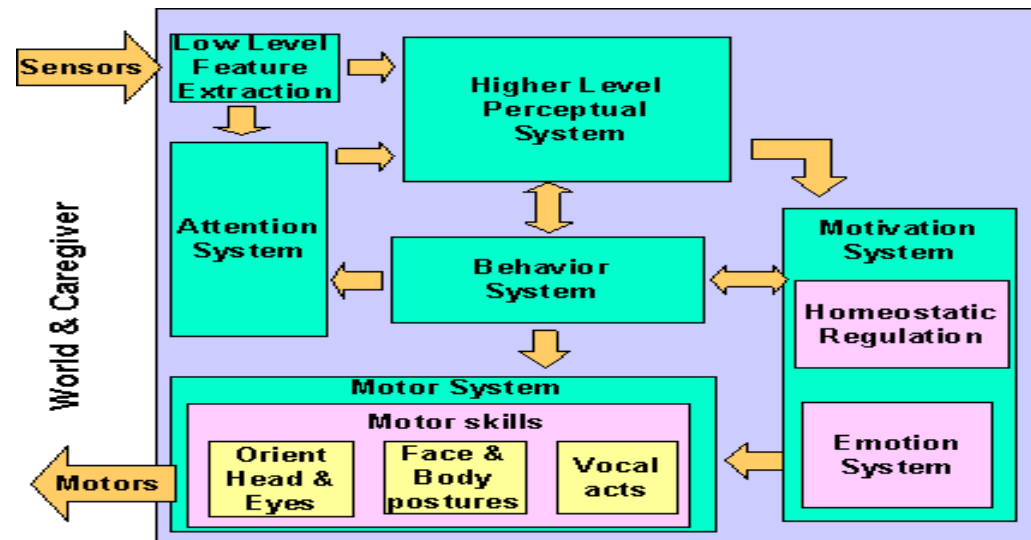
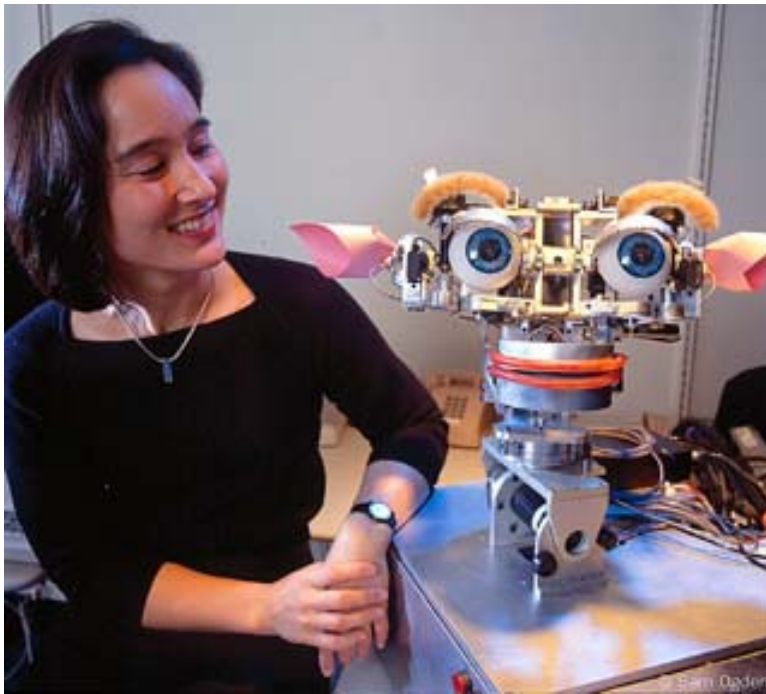
HELPING SENIOR CITIZENS NON INTRUSIVELY



THE COMPUTATIONAL, WIRELESS AWARE PET

BETH MYNATT

KISMET PROJECT - DESIGNING SOCIABLE ROBOTS



CYNTHIA BREAZEAL

THANK

